

PENCE GALLERY ANNUAL REPORT 2025

Building Community through the Arts

BOARD OF DIRECTORS

Cheryl Ozga, President
Carol Livingston, VP Development
Sue Smith, VP Programs
Megumi Yamanoha, Secretary
Felicia Miller, Treasurer
Cona Adams-Reno
Jose Arenas
Tom Doyle
Ken Kirsch
Rosa Marquez
Cristina Martinez-Carazo
Kim Ohlson
Barbara Smithson
Wil Uecker
Shoshana Zeldner

MISSION

The Pence Gallery's mission is to serve the community through offering high caliber art exhibits, supporting the development of local and regional artists, and providing educational programs for visitors of all ages.

STAFF

Roshelle Carlson, Teaching Artist
Eileen Hendren, Office Manager
Sophie Jorcino, Gallery Associate
Hollie Malamud, Development Manager
Jenna Matsubara, Marketing Associate
Liz McGuire, Graphic Designer
Jennifer Nachmanoff, Teaching Artist
Natalie Nelson, Director/Curator
Lyndsey Rocca, Art Therapist
Katharine Schultz, Education Director
Josh Tulman, Assistant Preparator
Amy Vidra, Preparator/Art Therapist

The Pence was voted



best art gallery in
Yolo County!

SUMMARY OF EXHIBITS & PROGRAMS

The Pence Gallery continued to be a dynamic site for gallery visitation and program participation during the past fiscal year (July 1, 2024 to June 30, 2025). Following our summer exhibits, Davis artist Dave Webb exhibited a moving narrative about his wife's cancer and recovery in *the grateful chair*. The exhibit encouraged visitors to share their reactions, such as messages of healing or grief with others through an interactive area in the gallery. This exhibit dovetailed nicely with our Healing Arts program, where participants who are grieving create individual and collaborative artworks while processing the loss of a loved one.



Dave Webb at his Artist Talk



Assorted Flavors, the Pence's first Members only exhibit

In winter 2025, gallery goers enjoyed the work of abstract artists Stephen Giannetti and Bussie Parker Kehoe, our awardee for the Emerging Artist Award. Other amazing exhibits included a retrospective for Ron Peetz showcasing his mixed media sculpture, paintings, and photography, and a new non-juried exhibit for Pence members titled *Assorted Flavors*. The Davis Art Studio Tour and the *Biophilia* exhibition both offered a look at how artists capture the beauty of the natural world in all its complexity.

ATTENDANCE

The Pence served 19,678 people onsite and offsite this fiscal year, through gallery visits, programs, and events—an increase of 4% from last year. In our youth programs, we served 794 students, parents, and teachers, including 610 students from Davis schools, who participated in the ArtSmart hands-on workshop and gallery tour program. This was a decrease of 371 students from last year due to our cancellation of our outreach school program.

Art in Action had a devoted audience of children, and their parents, who participated in creating an innovative art project every month from July to December, with limited programs resuming quarterly afterwards from January to June. Due to popular support from many donors during our Big Day of Giving fundraising event in May, the program will return to monthly frequency in September 2025.

While many of our programs focus on children and youth, the Pence has built a strong series of educational offerings for adults over the years. Last fiscal year, the Pence hosted

art workshops, classes, internships, and artist talks for 600 adults.

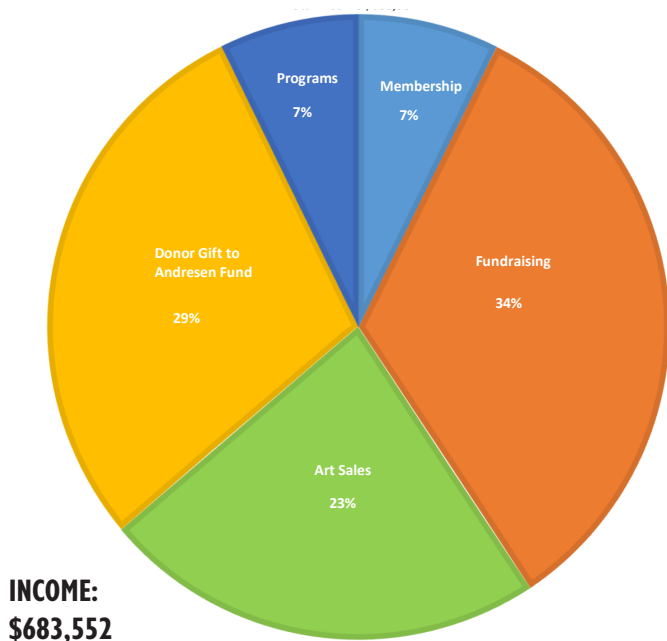
Our Night Market returned in June for artists ages 16-25 to network and sell their work directly to the public during our 2nd Friday ArtAbout event. Sixteen artists participated in this program, offering paintings, jewelry, and other handcrafted items for sale in our Main and Community galleries. This is a popular event that serves to support emerging artists in our region.

For over 20 years the Pence has participated in the monthly downtown art walk, 2nd Friday ArtAbout, which brings approximately 2,800 people to the Gallery annually. It also continues to coordinate the event for the 9-13 participating venues through marketing and support. Our 2nd Friday ArtAbout attendance at the Pence has diminished by 10% from last year, although attendance overall is up by 17%, as the event has quickly grown in popularity over the past year.

In terms of exhibits, we offered a record 477 local and regional artists an opportunity to exhibit their work in solo and group exhibits at the Pence.

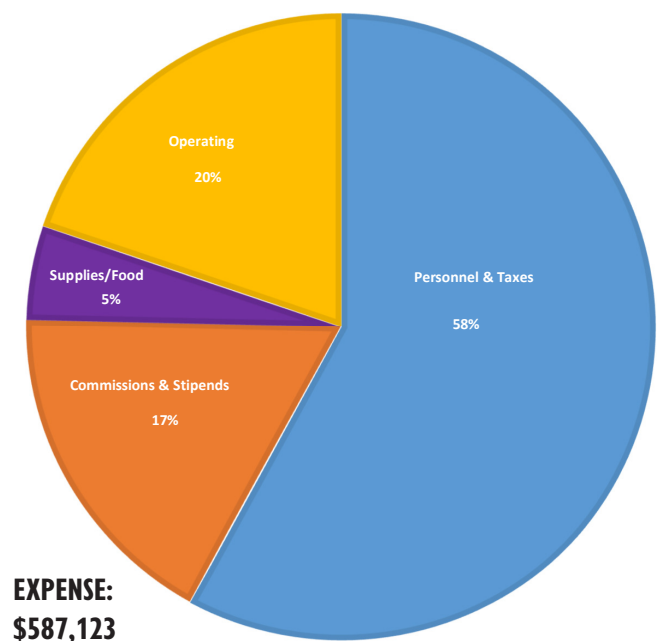
FISCAL OVERVIEW OF INCOME & EXPENSES

PENCE GALLERY INCOME 7/1/2024 - 6/30/2025



■ Membership ■ Fundraising ■ Art Sales ■ Donor Gift to Andresen Fund ■ Programs

PENCE GALLERY EXPENSES 7/1/2024 - 6/30/2025



■ Personnel & Taxes ■ Commissions & Stipends ■ Supplies/Food ■ Operating



Young visitors enjoy Art in Action classes



Board, staff, and volunteers at the Big Day of Giving lunch

MEMBERSHIP

As of July 15, 2025, the Pence family has 391 household members, representing a 5% growth in membership from the last fiscal year. We appreciate and are grateful to the new members who joined the Pence in fiscal year 2025, and to the members who renewed their membership for their consistent support. Of our current members, they comprise the following membership levels: 6 at Director's Circle, 28 at Benefactor, 79 at Patron, 106 at Muse, 164 at Art Lover, and 8 at the Student Level.

In the fall, members attended a lovely Membership Celebration at The HIVE Tasting Room and Kitchen in Woodland, where they enjoyed a delicious Spanish themed dinner, with sangria and dessert, and learned more about honey with Amina Harris, The HIVE founder and queen bee.

Thank you to our members, artists, sponsors, and businesses that have provided support for the Pence Gallery over the past year. We look forward to next year, when we plan to celebrate our 50th anniversary with activities for members to remember and honor our past, and to plan for our future!

530.758.3370
212 D Street
Davis CA, 95616
pencegallery.org

