



PENCE GALLERY

ANNUAL REPORT 2024

BOARD OF DIRECTORS

Wil Uecker, President
Carol Livingston, VP Development
Sue Smith, VP Programs
Megumi Yamanoha, Secretary
Felicia Miller, Treasurer
Cona Adams-Reno
Jose Arenas
Tom Doyle
Ken Kirsch
Rosa Marquez
Cristina Martinez-Carazo
Kim Ohlson
Cheryl Ozga
Barbara Smithson
Shoshana Zeldner

MISSION

The Pence Gallery's mission is to serve the community through offering high caliber art exhibits, supporting the development of local and regional artists, and providing educational programs for visitors of all ages.

STAFF

Roshelle Carlson, Art Teacher
Eileen Hendren, Assistant Director
Alex Herrera, Gallery Associate
Sophie Jorcino, Gallery Associate
Jenna Matsubara, Marketing Associate
Liz McGuire, Designer
Jennifer Nachmanoff, Art Teacher
Natalie Nelson, Director/Curator
Lyndsey Rocca, Art Therapist
Katharine Schultz, Education Director
Josh Tulman, Assistant Preparator
Amy Vidra, Preparator

SUMMARY OF EXHIBITS & PROGRAMS

The Pence Gallery continued to be a dynamic site for gallery visitation and program participation during the past fiscal year (July 1, 2023 to June 30, 2024). Our exhibit calendar began in the fall with a photography exhibit by Sacramento artist Andres Alvarez, capturing the people, places, and cultural celebrations of the Sacramento region. *Twilight* served to illuminate a cadre of artists working in Siskiyou County, who used the fading light of the day as a metaphor for creative exploration. Several solo exhibits served to share and recognize the amazing creativity of regional artists Sayako Dairiki, Joseph Bellacera, and Misuk Goltz.



Twilight, a group exhibit



Christina Kent enjoying her reception

Christina Kent, the 2023 Pence Emerging Artist Awardee, showcased new large-scale cityscapes and landscapes in her popular exhibit. Equally stunning was the two-person exhibit of recent paintings by Gina Werfel and Hearne Pardee in the spring, bringing in many of their colleagues and collectors from the region to view their display. The spring also brought a large group exhibit titled *Women's Work* to the Pence, sharing ideas about gender roles, women's history, and body politics. For the first time in over 10 years, the Pence also held a preview exhibit for the Davis Art Studio Tour, coordinated by the local artist group Arboretum Art Works, which served to help visitors plan their pathway for the Tour.

ATTENDANCE

The Pence served 18,904 people both at our facility and offsite this fiscal year. Through gallery visits, programs, and events, we saw an increase of 13% from last year. In our youth programs, we were able to serve 1,165 students, parents, and teachers, including 632 students from Davis schools, who participated in our hands-on workshop and gallery tour program. Our outreach program also reached a large number of students, serving 365 students from Shirley Rominger school in Winters.

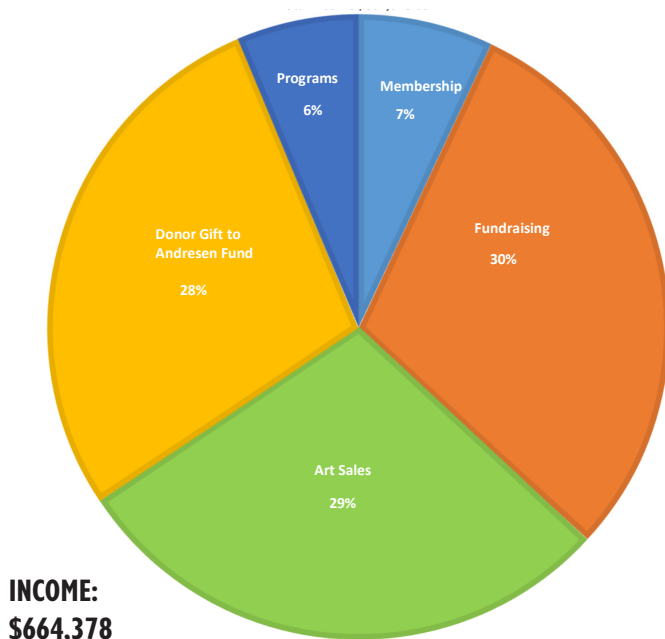
We facilitated a diverse range of hands-on art workshops, classes, artist talks, and demonstrations for 709 adults. This year saw a decrease in our attendance for adult programs, as the workshop participation began to decline after the large upswing in attendance from the previous year. Despite this, there was strong attendance for our monthly Art in Action, in which children ages 5-12 engaged in innovative art and craft projects.

Our Night Market returned in October and June for young artists ages 16-25 to network and sell their own work directly to the public during our 2nd Friday ArtAbout event. Our Art History Lecture Series came to a close this May, after four years of providing free online talks for the community. While still popular, demands on staff have curtailed programs for the time being.

Our 2nd Friday ArtAbout receptions continued to grow in popularity over the year by about 33% from last year. We saw the number of venues in downtown Davis increase to a maximum of thirteen, and performing artists were also quick to return to the event. As the Pence has taken a larger role in coordinating this artwalk, we are working to increase the event's visibility in the community. In terms of exhibits, we offered 351 artists an opportunity to exhibit in solo and group exhibits at the Pence.

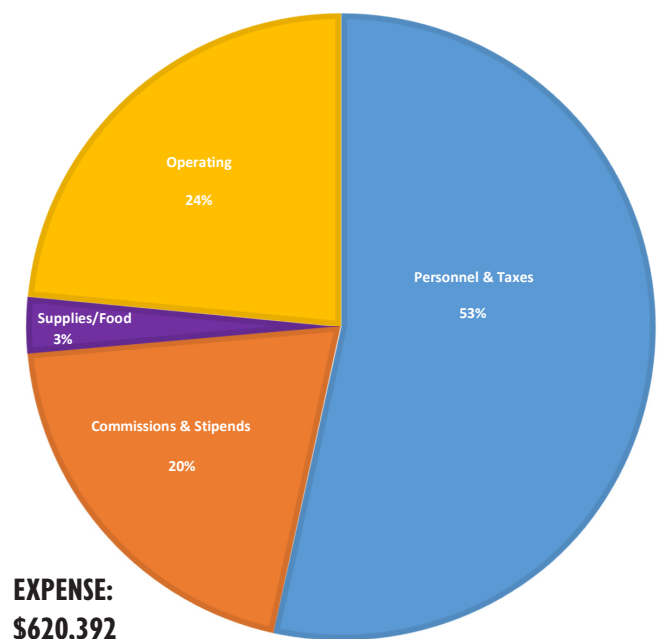
FISCAL OVERVIEW OF INCOME & EXPENSES

PENCE GALLERY INCOME 7/1/2023 - 6/30/2024



■ Membership ■ Fundraising ■ Art Sales ■ Donor Gift to Andresen Fund ■ Programs

PENCE GALLERY EXPENSES 7/1/2023 - 6/30/2024



■ Personnel & Taxes ■ Commissions & Stipends ■ Supplies/Food ■ Operating



Young visitors enjoy Art in Action outreach classes



Visitors perusing Misuk Goltz's art journals and exhibit

MEMBERSHIP

As of July 2024, the Pence has 378 household members, and we are grateful for their consistent support. Of those members, there is one Director's Circle member, 22 Benefactor members, 57 Patron members, 101 Muse members, 188 Art Lover members, and 9 Student members. Our focus on increasing the number of Pence members, as driven by the Pence Development Committee, Board of Directors, and staff, has benefitted from a Board and Staff retreat in fall 2023. Participants created a Roadmap for the membership program, and began to work on goals that are sure to prove successful in eliciting new members and in sustaining our current members. This year saw a 6% increase in the number of Pence members from last year.

Thank you to our members, artists, sponsors, businesses, and foundations that have provided support for the Pence Gallery over the past year. We appreciate your help in enabling us to serve the community through the arts!

530.758.3370
212 D Street
Davis CA, 95616
pencegallery.org

